

Meeting Date	April 22, 2025
Subject	Parking By-law Review – Draft for Adoption
Road to 2035	The Town of Renfrew will ensure the safety and protection of persons and property through effective community safety programs and fire, emergency planning, bylaw enforcement, and police services: Undertake a review of the parking by-law. Present draft bylaw to Council.
Recommendation	That Committee of the Whole recommends that Renfrew Town Council approve the Proposed Amendments to the Consolidated Parking By-law, and that a new by-law be brought forward to Council for adoption.
Originator	Michael Guest, Director of Fire, Emergency and Protective Services
CAO Review	I have reviewed and concur with the report and recommendation. Eric Withers, MCIP, RPP – Deputy Chief Administrative Officer/Director of Development & Environment
Financial Comment	Should Council approve the locations of all purposed accessible parking spaces, there will be costs associated with painting and signage. The cost to re-paint all spaces, both existing and proposed (25) would be approximately \$7,780, which includes the entire space and curb. The cost to paint strictly the new spaces with the standard markings would be approximately \$2,400. Costing for parking signage would be dependant on the direction from Council, however, the cost per sign is \$40.00. This project has not been budgeted for in the 2025 draft budget and would have to be added. Charlene Jackson – Treasurer/Director of Finance and Corporate Services.
Committee and Council Timing	To be considered on April 22 nd for final adoption by Council on May 13 th with the corresponding by-law brought forward.

Background

Periodic reviews of municipal bylaws allow the Town to adapt to technological, social, and environmental changes, ensuring regulations remain relevant and effective.

More specifically, The Town of Renfrew's parking bylaw provides enforcement of non-moving traffic offences to keep residents, drivers and business owners safe. Bylaw staff conduct regular parking patrols; therefore, revisions are necessary to improve the operations of the department as well as to provide consistency throughout the municipality.

Scope of Review

Staff reviewed the bylaw in its entirety in Q2 of 2024.

Public Consultation was conducted, and Citizens were encouraged to complete a survey that was open from September 12th through September 26th.

A draft bylaw was also circulated to Renfrew Town Council in September of 2024 requesting recommendations and feedback.

On December 10, 2024, Renfrew Town Council made the following motion; That by-law 104-2024: Consolidated Parking Bylaw listed on the Agenda of December 10, 2024, be tabled with a formation of a working group to make a recommendation back to Council which includes members of Council and Staff. An expression of interest was circulated to all members of Council with the composition of the working group being determined by the CAO.

The working group met on March 6th and March 27th to review the existing Town of Renfrew Consolidated Parking Bylaw 29-2012 in its entirety. As per Council's request, a review of all accessible parking spaces within the downtown core was also conducted.

The proposed draft parking bylaw is attached as **Appendix "A"**. Deletions are shown with a strikethrough, insertions are shown as text with underline.

Proposed Revisions to the Current Parking Bylaw - Highlights

WINTER PARKING RESTRICTIONS

- To provide further flexibility, winter overnight parking hours are proposed to be extended. Currently the

restrictions are from 2:00am to 7:00am, with recommended hours being from 12:00am to 7:00am.

DESIGNATED “NO PARKING” AREAS

- Paragraph 4 added, to allow for Council’s approval for special requests, notwithstanding the provisions of the parking bylaw.

SCHEDULE “A” STOPPING PROHIBITED

- Remove Schedule “A” Stopping Prohibited from Parking By-law 29-2012.

SCHEDULE “B” NO PARKING

- Add restrictions to Barr Street to ensure public safety and traffic flow in the school zone.
- Add restrictions to Munroe Avenue East to ensure public safety and traffic flow.
- Add restrictions to Ma-te-Way Park Drive to maintain traffic flow.
- Add restrictions to Hall Avenue to maintain traffic flow.

SCHEDULE “C” RESTRICTED PARKING

- Adjust parking restrictions to be consistent with 3-hour time limit 7 days a week for all on-street parking. It is anticipated that adding consistency throughout will ease confusion for residents and visitors.
- The addition of several 3-hour time limit parking spaces will be included in Municipal parking lots. Currently there are no time limits. By having both all-day parking as well as time restricted spaces, there will be flexibility for both the business owners/staff as well as patrons. Maps of the Municipal lots are included as Appendices, “C”, “D”, “E”, and “F”.

SCHEDULE “G” ACCESSIBLE PARKING (New)

Council has directed staff to review all current accessible parking spaces currently within the downtown core. During the review it was noted that some areas could benefit from additional parking. All accessible parking spaces are proposed to be added to the by-law. A map of the current and proposed spaces is attached as **Appendix “B”**.

- Current accessible parking spaces (11):
 - 30 Raglan Street South (Royal Canadian Legion)

- 83 Raglan Street South (Metro Parking Lot)
 - 177 Raglan Street South (The Flower Factory)
 - 248 Raglan Street South (Domino's Pizza)
 - 263 Raglan Street South (Scott's Shoe Store)
 - 321 Raglan Street South (Sun Life Financial)
 - Railway Avenue (2)
 - Plaunt Street (Rear Entrance to Town Hall)
 - 184 Bonnechere Street South (2)
- Proposed accessible parking spaces (14):
 - 83 Raglan Street South (Metro)
 - 108 Raglan Street South (River Optical)
 - 122 Raglan Street South (Co-operators)
 - 127 Raglan Street South (Town of Renfrew)
 - 176 Raglan Street South (Valley Thrift)
 - 212 Raglan Street South (2)
(Golden Age Activity Centre)
 - 226 Raglan Street South (Aikenhead's Drug Store)
 - 282 Raglan Street South (Vacant)
 - 302 Raglan Street South (Finnigan's Roadhouse)
 - 326 Raglan Street South (Community Living)
 - 19 Renfrew Avenue East
 - Plaunt Street (Rear Entrance to Town Hall)
 - 41 Vimy Blvd
- Remove 6 loading zones spaces and convert to accessible parking. The 6 loading zone locations to be removed are as follows:
 - 212 Raglan Street South (2)
(Golden Age Activity Centre)
 - 326 Raglan Street South (Community Living)
 - 11 Renfrew Avenue East (remove loading zone and replace with no parking)
 - Plaunt Street (behind Town Hall)
 - 41 Vimy Blvd

PARKING FINES

After reviewing neighbouring municipalities, staff found that set parking fines were slightly lower than comparable municipalities.

Increasing parking fines is anticipated to reduce and discourage illegal parking and increase compliance.

Options

The options available to the Town for this position are noted below:

1. Accept the proposed amendments as presented for approval at the next Regular Meeting of Council by by-law.
2. Make further amendments based on Council discussion for approval at the next Regular Meeting of Council.
3. Not accept the proposed parking by-law amendments as presented and recommend the parking bylaw working group make additional alterations and report back to Council.

Impact of Options

Various considerations for each of the three options are noted by option number below:

1. The Parking By-law working group deems the proposed changes to the current parking by-law as necessary to ensure the desired outcomes for parking in the Town, as well as to provide clarity for enforcement staff and the public. Approval would also allow staff to proceed with installing proper signage and pavement markings in the near future.
2. Council may choose to make further amendments to the proposed draft parking by-law which could be brought forward for adoption at the next Regular Council Meeting.
3. Council may wish to have the Parking By-law Working Group continue to review the by-law. This option could result in significant delays in terms of implementing necessary changes. These delays could also lead to the previously discussed safety risks remaining unaddressed.

Respectfully submitted for your consideration.



CONSOLIDATED PARKING BY-LAW

BY-LAW 29-2012

A by-law to regulate and control the parking of vehicles in the Town of Renfrew.

Passed June 25, 2012

Amendments

DATE	AMENDING BY-LAW	AMENDMENT(S)
November 13, 2012	By-Law 31-2012	Sec 12(1), Sch. "B", Sch. "C"
January 23, 2018	By-Law 6-2018	Sec. 9(1)(2), Sec. 13(1), Sch. "C"
November 27, 2018	By-Law 79-2018	Schedule "A" Stopping Prohibited Schedule "B" No Parking be revised and replaced
April 9, 2019	By-Law 24-2019	Schedule "C" Restricted Parking Be revised and replaced
October 27, 2020	By-Law 74-2020	Schedule "B" No Parking, be replaced by the revised schedule "B"

By-law No. 29-2012

**CORPORATION OF THE TOWN OF RENFREW
PARKING BY-LAW NO. 29-2012**

Table of Contents

PART I: Interpretation

1. Title	2
2. Definitions	2
3. Time	4
4. Schedules and Severability	4

PART II: Parking

5. Method of Parking	4
6. Parking and Stopping Prohibited at Any Time	5
7. Designated "NO STOPPING" Areas	5
8-7. Designated "NO PARKING" Areas	5
9-8. Restricted Parking	6
10-9. Access Routes for Fire Departments	6
11-10. School Bus Loading Zones	6
12-11. Parking on Municipal or Privately Owned Lands	7
13-12. Municipal Parking Lots	7
14-13. Winter Parking Restrictions	7
15-14. Municipal Vehicles Exemption	8
16-15. Emergency Prohibition	8
17-16. Designated Parking Spaces for Disabled Persons	8
18-17. Authorized Signs and Parking Control Devices	9
19-18. Designated "Permit Parking" Areas	9

PART III: OFFENCES & PENALTIES

20-19. Parking Infraction Notice	9
21-20. Penalties	9
22-21. Removal of Illegally Parked Vehicle	10
23-22. Enforcement and Authority	10

PART IV: APPLICATION & ADMINISTRATION

24-23. Repeal Section	10
25-24. Effective Date	11

SCHEDULES

~~Schedule "A": Stopping Prohibited in Specified Places 12~~
Schedule "C": Restricted Parking 15
Schedule "D": Fire Routes 16
Schedule "E": School Bus Loading Zones 17
Schedule "F": Permit Parking 18

APPENDIX

Appendix 1: Set Fines - Short Form Wording 19
BEING a by-law to regulate and control parking of vehicles in the Town of Renfrew.

WHEREAS pursuant to the *Municipal Act, 2001*, Chapter M.45, R.S.O. 1990, as amended, by-laws may be passed by the councils of local municipalities;

AND WHEREAS the Council of the Corporation of the Town of Renfrew deems it expedient to regulate and control traffic and parking of vehicles in the Town of Renfrew;

NOW THEREFORE the Council of the Corporation of the Town of Renfrew enacts as follows:

PART I - INTERPRETATION

Unless specifically modified or changed herein, words or expressions used in this Bylaw have the same meaning as given or used in the *Highway Traffic Act*, Chapter H.8, R.S.O. 1990, as amended.

1. TITLE

This By-law shall be known and may be cited as "THE PARKING BY-LAW".

2. DEFINITIONS

For the purpose of this By-law, the following definitions shall apply:

- (a) "accessible parking space" means a designated parking space identified by prescribed signage which is reserved for the exclusive use of personal with an accessible parking permit.
- (b) "accessible parking permit" means a valid permit issued by the Minister of Transportation under section 26 of the Highway Traffic Act or a valid permit, license plate or other marker or device bearing the international symbol of access issued by a jurisdiction other than Ontario.
- ~~(c)~~ **"access routes for fire department"** means any highway, road, driveway, lane, ramp, or other means of vehicular access or egress so designated and shall conform to the requirements of the *Fire Protection and Prevention Act, the Ontario Building Code Act* and regulations thereto as amended.
- ~~(b)~~(d) **"By-law Enforcement Officer"** means a person so appointed by the Municipality under the *Police Services Act*.
- ~~(c)~~(e) **"corner"** means the point of intersection of curbs or edges of the portion of the highway for vehicular traffic.
- ~~(d)~~(f) **"crosswalk"** means:
 - (i) that part of the highway at an intersection that is included within the confines of the lateral lines of the sidewalk on opposite sides of the highway

measured from the curbs; or in the absence of curbs, from the edges of the highway; or

- (ii) any portion of a highway at an intersection or elsewhere distinctly indicated for pedestrian crossing by signs, lines or other markings on the surface.

~~(e)~~(g) **“curb”** shall include the edge of the travelled portion of the highway.

~~(f)~~(h) **“designated parking space”** means a parking space designated under this By-law for the exclusive use of a vehicle displaying a permit in accordance with the requirements of the *Highway Traffic Act* and the regulations made there under and this By-law as amended.

~~(g)~~(i) **“boulevard”** means all the parts of the highway save and except any roadway, shoulder, grassy area, or sidewalk, and

“central boulevard” means that part of the highway lying between the travelled portions of divided highway and includes channelizing islands, **“outer boulevard”** means that part of the highway lying between any sidewalk and the travelled portion of the highway or the near edge of the shoulder where such exists,

~~(h)~~(j) **“Director of Development and Works Infrastructure, Public Works & Engineering”** means a person so appointed by the Municipality.

~~(i)~~ **“disabled person”** means a person who has applied for and has met the requirements and has been issued a disabled person parking permit in accordance with the *Highway Traffic Act, Chap H.8 R.S.O. 1990 as amended.*

~~(j)~~(k) **“driveway”** means improved land on a highway which provides vehicular access between a highway to a laneway or a parking area on adjacent land.

~~(k)~~(l) **“highway”** includes a common and public highway, street, avenue, parkway, driveway, square, place, bridge, viaduct, or trestle, designed and intended for, or used by, the general public for the passage of vehicles.

(m) **“highway direction”** means the direction that a highway is deemed to run for the purposes of this By-law and is not necessarily the direction the highway runs in its entire length.

~~(l)~~(n) **“Issuing Officer”** means a Police Officer, Municipal Law Enforcement Officer or a Provincial Offences Officer authorized pursuant to the Provincial Offences Act to issue a Parking Infraction Notice.

~~(m)~~(o) **“intersection”** means the area embraced within the prolongation or connection of the lateral curb lines or, if none, then of the lateral boundary lines of two or more highways which join one another at an angle, whether or not one highway crosses the other.

~~(n)~~(p) **“laneway”** means improved land adjacent to the highway that provides access between a highway and a parking area or other destination.

~~(o)~~(q) **“Municipality”** means The Corporation of the Town of Renfrew.

~~(p)~~(r) **“normal business hours”** means 8:00 a.m. to 4:00 p.m., Monday to Friday except on holidays defined under the *Retail Business Holiday Act*, Chapter R.30, R.S.O. 1990, as amended.

~~(q)~~(s) **“obstruct traffic”** means to park a vehicle in a manner that obstructs the orderly flow and safe passage of traffic moving on a highway in any direction.

~~(t)~~(t) **“one-way street”** means a highway upon which the movement of vehicular traffic is designated by a By-law for movement in one direction only.

~~(s)~~(u) **“park or parking”** - means the halting of a vehicle, whether occupied or not, except when standing temporarily for the purpose of and while actually engaged in loading or unloading merchandise or passengers.

~~(t)~~(v) **“parking lot (public or private)”** means any open area or portion of a structure, other than a street or highway intended for the temporary parking of vehicles whether its use involves the payment of a fee or otherwise.

~~(u)~~(w) **“parking space”** - means a part of the highway, the use of which is designated by signs or posts or lines or other markings on the highway or any other area used for the purpose of parking a vehicle.

~~(v)~~(x) **“permit”** means a ~~Disabled Person Parking Permit issued under the Highway Traffic Act; a permit, number plate or other marker or device issued by another jurisdiction and recognized under that Act; or a~~ permit issued by the Town of Renfrew for extended parking in a municipal parking lot and/or street.

~~(w)~~(y) **“police officer, constable, special constable”** - means a person so appointed by the Ontario Provincial Police.

~~(x)~~(z) **“sidewalk”** means that portion of a highway between the curb lines and the property line of the lot abutting the ~~highway~~highway, and which is intended for the use of pedestrians and shall include all multi-use pathways whether constructed of concrete or asphalt.

~~(y)~~(aa) **“sign”** means any sign or marking on a highway, curb or sidewalk or other device placed or erected under the authority of the By-law for the purpose of regulating, warning or guiding traffic and parking; or for the purpose of the removal of snow.

~~(z)~~(bb) **“stand or standing”** means the halting of a vehicle, whether occupied or not, except for the purpose of and while actually engaged in receiving or discharging passengers.

~~(aa)~~(cc) **“stop or stopping”** means the halting of a vehicle, even momentarily, except when necessary to avoid conflict with other traffic or in compliance with the directions of a Police officer or of a traffic control sign or signal.

~~(bb)~~(dd) **“Town”** means The Corporation of the Town of Renfrew.

~~(cc)~~(ee) **“Turning Basin”** means an enlarged area at the end of a highway or roadway designed to permit vehicles to turn around.

~~(dd)~~(ff) **“unsigned highway”** means a highway or portion of highway with no posted signs restricting or not permitting the parking of vehicles.

~~(ee)~~(gg) **“vehicle”** includes an automobile, truck, motorcycle, motorized snow vehicle, bus, trailer, traction engine, farm tractor, road-building machine and any vehicle drawn, propelled or driven by any kind or power, including muscular power, but does not include vehicles running only upon rails.

3. TIME

Notwithstanding the *Time Act*, Chapter T. 9, R.S.O. 1990 as amended, so long as the time commonly observed in the Municipality is one hour in advance of Standard Time,

the times mentioned in this By-law shall be reckoned in accordance with the time so commonly observed and not Standard Time.

4. SCHEDULES AND SEVERABILITY

- (1) The Schedules A to, and including, F attached to this By-law shall be read with and form part of this By-law. All measurements contained in the attached schedules are referenced from the nearest intersecting highway limit unless otherwise specified therein.
- (2) Should any part, section, subsection or portion of this By-law be repealed or declared by a court of competent jurisdiction to be illegal, the same shall not affect the validity of the By-law as a whole or in part thereof, except for that which was declared to be invalid.

PART II - PARKING

5. METHOD OF PARKING

(1) Direction

No person shall park a vehicle on any highway, other than a one-way street, unless on the right-hand side of the street, having regard for the direction in which the vehicle had been proceeding. The nearest front and rear wheels of the parked vehicle shall be parallel to and not more than 30 cm from the edge of the highway. Notwithstanding, the distance between the wheels and the highway edge shall not apply where angle parking is specifically authorized by this By-law.

(2) Within Parking Space

Individual parking spaces may be defined by the Town by painted lines or other suitable marks on the surface of the parking lot or highway. Where such parking spaces are so defined, it shall be unlawful to park a vehicle other than within the confines of the parking spaces so defined.

6. PARKING AND STOPPING PROHIBITED AT ANY TIME

No person shall park or stop, or cause to be parked or stopped, any vehicle in any of the following places at any time of the day unless such stopping is explicitly permitted by painted lines on the pavement, signs or other municipal markings or at the direction of a Police Officer:

- a. On any sidewalk;
- b. In any intersection;
- c. In a turning basin;
- d. In front of a public driveway;
- e. Within 9 metres of any intersection [unless otherwise posted by the Town of Renfrew](#);
- f. Within a distance of 3 metres from the closest point on the curb to any fire hydrant;
- g. Within 6 metres of a crosswalk at an intersection;
- h. On any bridge;
- i. On any highway in such a manner as to obstruct traffic;
- j. In such a position as to prevent the convenient departure of any other vehicle previously parked or standing;
- k. In front of the entrance to a fire station;

- l. On any Yield Lane or within 5 metres of any Yield Lane;
- m. On any crosswalk;
- n. On any curb;
- o. Adjacent to any median strip constructed on the highway;
- p. In front of a private driveway;
- q. Within 0.75 metres of a public driveway;
- r. Within 0.75 metres of a private driveway;
- s. Within 15 metres of a controlled intersection;
- t. On the approaches to any bridge;
- u. In front of the entrance to a hospital.
- v. On any central boulevard or on any outer boulevard or adjacent to either side or the ends of any central boulevard or median strip, except when parking in these locations is otherwise permitted by this By-law.

~~7. DESIGNATED "NO STOPPING" AREAS~~

78. DESIGNATED "NO PARKING" AREAS

- (1) Those highways and portions of highways named and described in **Schedule B** hereto attached shall be designated "No Parking" areas.
- (2) Where signs to that effect are on display, no person shall park a vehicle at any time within the highway or portion of highway named or described in **Schedule B** as "**No Parking**" areas.
- (3) In the event of a conflict between a provision in the By-law made under this section and a provision of any other section, the provision that is the most restrictive of parking prevails.

~~(3)~~(4) Notwithstanding provisions of this by-law, parking may be permitted on municipal or public property, roadways or highways, subject to prior approval by Renfrew Town Council

89. RESTRICTED PARKING

- (1) Those Municipal Parking Lots, excepting designated Reserved Parking Spaces, highways or portions of highways named and described in **Schedule C** hereto attached shall be designated as "**Restricted Parking**" areas.
[AMENDED BY BY-LAW 6-2018]
- (2) Where authorized signs to that effect are on display, no person shall park a vehicle within Municipal Parking Lots, excepting designated Reserved Parking Spaces, highways or portion of highways named or described in **Schedule C** for a period longer than specified, during the time period for which such parking restrictions are in effect as indicated on the said Schedule.
[AMENDED BY BY-LAW 6-2018]
- (3) No person shall park on any highway, a heavy vehicle, in excess of 5,000 kg vehicle weight, for a period longer than two hours.
- (4) No person shall park on any unsigned highway for a period longer than 24 hours.
- (5) In the event of a conflict between a provision in the By-law made under this section and a provision of any other section, the provision that is the most restrictive of parking prevails.

940. ACCESS ROUTES FOR FIRE DEPARTMENT

- (1) The private highways or portions of parking lots of the specified public buildings named and described in **Schedule D** hereto attached, are hereby designated as "**Fire Routes**".
- (2) Where authorized signs to that effect are on display, no person shall park or stand a vehicle within or so as to obstruct a fire route described or named in **Schedule D**.

1044. SCHOOL BUS LOADING ZONES

- (1) Those portions of highways named and described in **Schedule E** shall be designated as "**School Bus Loading Zones**". Such School Bus Loading Zone designations shall apply between the hours of **8:00 a.m. and 5:00 p.m.**, Monday to Friday inclusive subject to Section 10(2). The School Bus Loading Zone designation shall be considered an overlay designation imposed in addition to other parking restrictions contained herein.

At all other times and days, parking in such designated "**School Bus Loading Zones**" shall be in compliance with the provisions of this By-law.

- (2) Notwithstanding paragraph (1), the designation for the Renfrew Collegiate High School shall apply between the hours of 8:00 a.m. and 4:00 p.m.
- (3) Where authorized signs to that effect are on display, no person shall stand or park any vehicle, other than a school bus, in any area designated as a School Bus Loading Zone as described or named on **Schedule E**.

1142. PARKING ON MUNICIPAL OR PRIVATELY OWNED LANDS

- (1) No person shall park or leave any vehicle:
 - a) on Municipally owned property without the written consent of the Town provided by the Clerk of the municipality; or
 - b) on privately owned or controlled property without the written consent of the property owner or occupant [AMENDED BY BY-LAW 31-2012]
- (2) Where signs have been erected and are on display, no person shall park or leave any vehicle in the off-street parking lots or vacant lands adjacent to and associated with municipal facilities unless such person is an employee or elected official of the Town engaged in municipal business or such person is, at the time the vehicle is parked or left, actively participating in the activities currently being provided in or on the municipal property or engaged by such patron to provide transportation.
- (3) Notwithstanding Section 11(3), signs may be posted by the Town defining certain parking spaces within the lands associated with the facilities as being reserved for use by certain classes of vehicles and such use shall be clearly marked on the sign. No person shall park any vehicle other than the class of vehicles marked on the sign, in any parking space so reserved.
- (4) No person shall operate or permit the operation of motor vehicles, motorized snow vehicles and other conveyances of every description and whatever the motive power, in a public park. This section shall not apply to any area within a

public park that is designed and designated as a highway or parking area for vehicular traffic.

123. MUNICIPAL PARKING LOTS

- (1) No person shall park a vehicle or permit a vehicle to remain parked in the Municipal Parking Lots known as 1. 188 Plaunt Street Lot, 2. 110 Plaunt Street Lot, 3. 216 Argyle Street Lot, and 4. 313 Argyle Street Lot in a designated Reserved Parking Space. [AMENDED BY BY-LAW 6-2018]
- (2) No person shall park a vehicle or permit a vehicle to remain parked in the Municipal Parking Lot between 12:00 a.m. and 7:00 a.m. unless by permit.
- (3) No person shall park a vehicle or permit a vehicle to remain parked in such a manner that it is not wholly within the area designated as a parking space unless the vehicle is of such length as to render it impossible to park it in one parking space. In this case, the adjoining parking space may be used but in no case shall any person park a vehicle or permit a vehicle to remain parked in such a manner as to obstruct the use of the parking lot, the parking lot entrance, exit or highway that is laid out for the movement of vehicles through the parking lot.

134. WINTER PARKING RESTRICTIONS

- (1) No person shall park, or stand a vehicle or permit a vehicle to remain parked on any highway or in a municipal parking lot between the hours of 12:00 a.m. to 7:00 a.m. from December 1 in any year to March 31 of the following year, both dates inclusive.
- (2) No person shall park or stand a vehicle or permit a vehicle to remain parked on any highway at any time when the highway is specially marked with signs indicating snow removal or when such person has received verbal or written notice from a representative of the Town indicating the prohibition of parking.
- (3) This section shall be enforced by the By-law Enforcement Officer_ and/or the ~~Director of Development and Works~~ [Director of Infrastructure, Public Works and Engineering](#) or ~~his designate~~ [their designate](#).

145. MUNICIPAL VEHICLES EXEMPTION

Any vehicle owned by the Town and any authorized emergency vehicle shall be permitted to park in any parking space, provided always that said vehicle displays on the exterior of the vehicle, a recognized symbol of the Town or wording displaying the ownership of the vehicle and is being used in the performance of municipal duties. This exemption also includes the personal vehicles of volunteer firefighters when on duty.

156. EMERGENCY PROHIBITION

- (1) Notwithstanding anything to the contrary contained, herein, a Police Officer, Fire Chief ~~/ Captain~~ [or designate, Director of Development and Works](#) [Director of Infrastructure, Public Works & Engineering](#) or designate or By-law Enforcement Officer, during any emergency or special circumstance may:
 - a. prohibit any or all parking on a highway within the area affected by the emergency or special circumstances; or
 - b. authorize the erection of temporary "No Parking" signs or barricades on any highway or portion of highway; or
 - c. declare that any vehicle already parked is parked illegally regardless of the time permitted for parking such vehicle under the provisions of this By-law.

- (2) Where possible, the owner or driver of a vehicle declared to be illegally parked, under section 16 (1) of this By-law, shall be notified by a Police Officer or By-law Enforcement Officer that such parking has been prohibited and shall be ordered to remove the vehicle within a time specified.
- (3) Where the owner or driver notified under section 16 (2) to remove the vehicle does not do so, or where the owner or driver cannot immediately be located, the said vehicle declared to be parked illegally may be removed and impounded forthwith by an order of a Police Officer or By-law Enforcement Officer in accordance with Section 22 of this By-law "Removal of Illegally Parked Vehicles". Where in the opinion of the Officer, the vehicle owner has not voluntarily contravened the order, the costs associated with the towing and impounding will be borne by the Town.

167. DESIGNATED ACCESSIBLE PARKING SPACES FOR DISABLED PERSONS

- (1) No person shall park a vehicle in a designated "Accessible Parking Space ~~for Disabled Persons~~" when a properly marked sign is displayed unless a valid ~~disabled persons-accessible~~ parking permit is displayed on the front dash of the vehicle or the front of an extended sun visor so as to be clearly visible from the exterior of the vehicle.
- (2) The vehicle is operated by the holder of an accessible disabled person parking permit or by a person engaged to pick up or transport the holder of an accessible disabled person parking permit.

178. AUTHORIZED SIGNS AND PARKING CONTROL DEVICES

- (1) The Town shall erect all authorized signs and other parking control devices necessary for the lawful implementation and enforcement of this By-law.
- (1) Those highways and portions of highways named and described in **Schedule F** hereto attached shall be designated "Permit Parking" areas.
- (2) Where signs to that effect are on display, no person shall park a vehicle at any time within the highway or portion of highway named or described in **Schedule F** as "**Permit Parking**" areas with the exception of vehicles displaying an authorized permit issued by the Town of Renfrew.
- (3) In the event of a conflict between a provision in the By-law made under this section and a provision of any other section, the provision that is the most restrictive of parking prevails.

PART III - OFFENCES & PENALTIES

1920. PARKING INFRACTION NOTICE

- (1) Where a vehicle is found to be in contravention of the parking or stopping provisions of this By-law, the Issuing Officer may issue and place on the vehicle, a serially numbered Parking Infraction Notice, in the form prescribed by the Provincial Offences Act.
- (2) The serially numbered Parking Infraction Notice shall state:
 - a. the licence number of the vehicle;

- b. the nature of the alleged infraction;
 - c. the date, time and place of the alleged infraction;
 - d. the set fine provided therein for the violation and
 - e. a statement that the owner shall within fifteen (15) days pay the set fine provided for the infraction by taking it or mailing it to the Town of Renfrew Municipal Office.
- (3) The Parking Infraction Notice mentioned in Section 20(2) above shall be prepared as required and the Issuing Officer shall attach one copy to the vehicle and retain the other copy for further processing in accordance with the *Provincial Offences Act*, Chapter P.33, R.S.O. 1990, as amended.
 - (4) If payment is not made in accordance with the procedure set out on the Parking Infraction Notice provided for in Section 20(2) e. above, the *Provincial Offences Act* shall apply.

204. PENALTIES

- (1) Any person violating any of the provisions of this By-law has committed an offence and upon conviction shall be liable to a penalty pursuant to the *Provincial Offences Act*, Chapter P.33, R.S.O. 1990 as amended.
- (2) The driver of a vehicle, not being the owner, is liable to any penalty provided under this By-law.
- (3) The owner of the vehicle may be charged with and convicted of an offence under this By-law for which the driver of the vehicle is subject to be charged unless, at the time of the offence, the vehicle was in the possession of some person other than the owner without the owner's consent and on conviction the owner is liable to the penalty prescribed or provided for the offence.
- (4) Set fines may be established for certain offences contained in this By-law. Such set fines shall be established pursuant to the *Provincial Offences Act* and shall become effective upon the approval of same by the Chief Judge of the *Provincial Offences Court*.

212. REMOVAL OF ILLEGALLY PARKED VEHICLE

- (1) A police officer, by-law enforcement officer or an officer appointed for carrying out the provisions of the *Highway Traffic Act*, upon discovery of any vehicle parked or left in contravention of this By-law, may cause it to be moved or taken to and placed or stored in a suitable place and all costs and charges for removing, caring and storage thereof, if any, are a lien upon the vehicle which may be enforced in the manner provided by Part III of the *Repair and Storage Liens Act*, Chapter R.25, R.S.O. 1990 as amended.
- (2) The provisions of this section also apply to the Director of [Infrastructure, Public Works & Engineering](#) or their ~~Development and Works~~ or his designate for purposes of enforcing Section 14 Winter Parking Restrictions.
- (3) The Town will not be liable for damages that may occur to vehicles being moved under the provisions of Section 22(1).

223. ENFORCEMENT AND AUTHORITY

- (1) The provisions of this By-law shall be enforced by By-law Enforcement Officers and Police Officers appointed by the Town.

- (2) The provisions of Section 14 of this By-law may also be enforced by the Director of [Infrastructure, Public Works & Engineering or their Development and Works](#) or his/her designate.

PART IV – APPLICATION & ADMINISTRATION

234. REPEAL SECTION

BE IT FURTHER ENACTED, that the parking provisions of By-Law 21-90, and all subsequent by-laws that amended the parking provisions of By-Law 21-90, are hereby repealed upon this by-law coming into force and taking effect as provided for in Section 25 of this by-law.

245. EFFECTIVE DATE

The provisions of this By-law shall come into force and take effect on the day of its passing.

THE COUNCIL OF THE CORPORATION OF THE TOWN OF RENFREW ENACTS AS FOLLOWS:

SCHEDULE	DESIGNATION
Schedule 'A'	Stopping Prohibited
Schedule 'B'	No Parking
Schedule 'C'	Restricted Parking
Schedule 'D'	Fire Routes
Schedule 'E'	School Bus Loading Zones
Schedule 'F'	Permit Parking
Schedule 'G'	Accessible Parking

Read a First and Second time this 25th day of June, 2012.
Read a Third and Final time this 25th day of June, 2012.

William A. Ringrose, Mayor Kim R. Bulmer, Clerk

SCHEDULE "A" STOPPING PROHIBITED

STREET	LOCATION	SIDE	PERIOD
Barr St.	Approximately 15 m on each approach to the pedestrian crossover, and 10 m on each departure to the pedestrian crossover	both	at anytime
Bonnechere St. S.	Between Renfrew Ave. W. and Cross Ave.	East	Mon.-Fri. 8 am-4 pm
Raglan St. S.	Between Hall Ave. and the Millennium Trail	both	at any time
Renfrew Ave. E.	Between Raglan St. S. and Plaunt St. S.	both	at any time
Renfrew Ave. W.	Between Raglan St. S. and Argyle St. S.	both	at any time
Munroe Ave. E.	Approximately 15 metres east of the west entrance to Central School west to Lorne Street	North	at any time

(AMENDED BY BY-LAW 79-2018)

SCHEDULE "AB"
NO PARKING

Column 1 Street	Column 2 From	Column 3 To	Column 4 Side	Column 5 Period
Albert St.	Opposite the Quail Creek entrance	Hospice Renfrew entrance	east	at any time
Albert St. 442 & 446 Albert St.	Property line between Albert St.	Termination of	west	at any time
Airth Blvd.	Opeongo Ave.	62 m. South	both	at any time
Argyle St	SAW corner Munroe Ave	27m South	west	at any time
Argyle St.	Renfrew Ave. W.	Opeongo Rd.	east	at any time
Argyle St.	Patrick Ave.	Renfrew Ave W.	east	at any time
Arnprior Ave.	Queen St. S.	Carswell St.	south	at any time
Baldwin St	Ready Ave.	North 100	west	at any time
<u>Barr Street Blvd.</u>	<u>5m north of crosswalk</u>	<u>Veterans Memorial</u>	<u>west</u>	<u>at any time</u>
<u>Barr Street walk</u>	<u>no parking within 15m on either side of crosswalk</u>		<u>both</u>	<u>Mon-Fri 8am-4pm</u>
Barnet Blvd.	Gillan St.	Second St <u>Millenium Trail</u>	<u>West</u>	at any time
<u>Barnet Blvd.</u>	<u>Eighth St</u>	<u>Millenium Trail</u>	<u>both</u> <u>East</u>	<u>at any time</u>
Bonnechere St. S.	Lisgar Ave.	Cross Ave.	east	at any time
Bonnechere St. S.	Renfrew Ave. W.	Cross Ave.	east	Mon. - Fri. 8am-4p.m
Bonnechere St. S.	Renfrew Ave. W.	Opeongo Rd.	both	at any time
Bridge St.	Argyle St. N.	Ready Ave.	west	at any time
Bridge St.	Raglan St. N.	Arthur Ave.	east	at any time
Bruce Ave.	Stewart St.	E. Town limits	both	at any time
Coumbes Lane	Veterans' Blvd.	Terminus	east	at any time
Duke St.	Raglan St. S.	Argyle St. S.	both	at any time
Elgin Ave.	Stewart St.	Aberdeen St.	south	at any time
Elgin St.	Stewart St.	Albert St.	north	at any time
Hall Ave.	Les Fraser St.	Raglan St. S.	south	at any time
Hall Ave.	Gillan St.	Les Fraser St.	both	at any time
Hall Ave.	Plaunt St. S.	Raglan St. S.	north	at any time
<u>Hall Ave.</u>	<u>Raglan St. S.</u>	<u>Gillan Rd</u>	<u>both</u>	<u>at any time</u>
Health Village Lane	Stewart St. (Hwy. 60)	Albert St.	both	at any time
Jennett St. S.	Renfrew Ave. E.	Lorne St. S.	west	at any time
Lisgar Ave.	Bonnechere St	Lochiel St.	south	at any time
Lisgar Ave.	Bonnechere St.	Queen St.	south	at any time
Lochiel St.	Bridge St.	Patrick Ave.	east	at any time
Lochiel St.	Patrick Ave.	Renfrew Ave. W.	east	at any time
<u>Lochiel St</u>	<u>Bridge St.</u>	<u>O'Gorman</u>	<u>east</u>	<u>at any time</u>
Lochiel St.	Renfrew Ave. W.	Opeongo Rd.	<u>east</u> <u>both</u>	at any time
Lochiel St.	Munroe Ave.	North 30 meters	west	at any time
<u>Lochiel St.</u>	<u>O'Gorman</u>	<u>Monroe Ave</u>	<u>east</u>	<u>at any time</u>
Lorne St.	Munroe Ave.	Dairy	east	at any time
Lorne St. N	30m east of	90m east of Munroe Ave	west	at any time
Ma-Te-Way Park Drive	<u>Lisgar Ave</u> Haig Ave.	<u>South dead end</u> <u>South dead end</u>	both	at any time
Munroe Ave.	Plaunt St. S.	Lochiel St S.	both	at any time
<u>Munroe Ave. E</u>	<u>Lorne St.</u>	<u>Peter St.</u>	<u>south</u>	<u>Mon-Fri 8am-4pm</u>

Formatted: Font: 10 pt

Formatted Table

Formatted: Not Highlight

By-law No. 29-2012

<u>Monroe Ave. E</u>	<u>Lorne St.</u>	<u>Stevenson Cres.</u>	<u>north</u>	<u>at any time</u>
O'Brien Rd.	Hwy. #417	Veterans' Blvd.	both	at any time
Opeongo Rd.	Raglan St. S.	Town Limits	both	at any time
Pine Ave.	Raglan St. S.	Coleraine Dr.	both	at any time
Plaunt St. S.	Munroe Ave. E.	Hall Ave. E.	west	at any time
Plaunt St. S.	Munroe Ave.	old C.P.R. crossing	east	at any time
Prince Ave. E.	Plaunt St. S.	Raglan St. S.	both	at any time
Prince Ave. W.	Raglan St. S.	West to end	south	at any time
Prince Ave. W.	Lochiel St. S.	Bonnechere St. S.	north	at any time
Quarry Ave.	Barr St.	Plaunt St. S.	north	at any time
Quarry Ave.	Plaunt St. S.	East 30 meters	south	at any time
Queen St.	Lisgar Ave.	Renfrew Ave. W.	east	at any time
Raglan St. N.	Bruce St.	North to end	west	at any time

SCHEDULE "AB"
NO PARKING

Column 1 Street	Column 2 From	Column 3 To	Column 4 Side	Column 5 Period
Muriel St.	Raglan St. S	First St.	both	at any time
Raglan St. N.	Grigg Ave.	North to end	east	at any time
Raglan St. S.	Opeongo Rd.	Pine Ave.	both	at any time
Raglan St. S.	Munroe Ave.	C.P.R. tracks Algonquin Trail	both	at any time
Railway Ave.	Plaunt St. S.	Raglan St. S.	south	at any time
Ready Ave.	Baldwin St.	West to end	north	at any time
Ready Ave.	Stewart St.	West to end	south	at any time
Renfrew Ave. E.	Jennett St. S.	Plaunt St. S.	north	at any time
Renfrew Ave. E.	Plaunt St. S.	Raglan St. S.	both	at any time
Renfrew Ave. W.	Raglan St. S.	Queen St. S.	north	at any time
Renfrew Ave. W.	Raglan St. S.	Argyle St. S.	south	at any time
Renfrew Ave W	Lochiel St S.	Bonnechere St S.	south	at any time
Stevenson Crescent	Limits as defined by approved signage		east	at any time
Stewart St.	Elgin Ave.	N. Town limit	both	at any time
Stewart St.	239 Stewart St.	Arthur Ave.	east	at any time
Veterans' Mem. Blvd.	O'Brien Rd.	Hall Ave.	both	at any time
Xavier St.	Railway Ave. S.	Renfrew Ave. E.	west	at any time
[AMENDED BY BY-LAW 31-2012]				
[AMENDED BY BY-LAW 79-2018]				
[AMENDED BY BY-LAW 74-2020]				

**SCHEDULE "BC"
RESTRICTED PARKING**

Column 1 <u>Street</u>	Column 2 <u>From</u>	Column 3 <u>To</u>	Column 4 <u>Side</u>	Column 5 <u>Days</u>	Column 6 <u>Time</u>
Grigg Ave. limit	Raglan St. N.	Moore St. Grigg Ave.	north	7 days/week	3 2 hr. time limit
Patrick Ave.	Raglan St. S.	Argyle St. S.	South south	7 days/week Mon., Tues., Wed. & Sat. Thurs. & Fri.	3 2-hr. time limit 9am-6pm 3 2-hr. time limit 9am-9pm 3 2 hr. time limit
Raglan St. S. limit	Opeongo Rd.	Munroe Ave.	both	7 days/week	3 hr. time limit 3 2-hr. time limit
Railway Ave. limit	Raglan St. S.	Plaunt St.	north	7 days/week	4 hr. time limit 3 2 hr. time limit

Municipal Parking Lots

1. 188 Plaunt Street South Lot
28 Spaces – All Day Parking
10 Spaces – 3 Hour Time Limit (all spaces on the northwest side of the lot, adjacent to 191 Plaunt St South)
2. 110 Plaunt Street South Lot
All Day Parking
3. 216 Argyle Street South Lot
27 Spaces – All Day Parking
9 Spaces - 3 Hour Time Limit (all spaces on the northwest side of the lot, adjacent to 196 Argyle St South)
4. 313 Argyle Street South Lot
6 spaces – 3 Hour Time Limit

Formatted: Indent: Left: 0.5", No bullets or numbering

Formatted: Font: 10 pt

Formatted: Justified, Indent: Left: 0.14", Hanging: 0.36", Space After: 0.15 pt, Line spacing: Multiple 1.04 li, No bullets or numbering, Tab stops: Not at 1.63"

Formatted: Indent: Left: 0.5", No bullets or numbering

Formatted: Font: 10 pt

Formatted: Normal, No bullets or numbering

Formatted: Font: 10 pt

Formatted: Font: 10 pt

[AMENDED BY BY-LAW 31-2012]
[AMENDED BY BY-LAW 6-2018]
[AMENDED BY BY-LAW 24-2019]

**SCHEDULE “CD”
FIRE ROUTES**

Column 1 Building	Column 2	Column 3 Location	Fire Route
Best Western		760 Gibbons Rd	Area as posted and/or marked
Bonnechere Manor		470 Albert St.	Area as posted and/or marked
Calloway Reit (Renfrew) Inc.		910 O'Brien Rd	Area as posted and/or marked
Canadian Tire		1050 O'Brien Rd.	Area as posted and/or marked
Groves Park Lodge		470 Raglan St N.	Area as posted and/or marked
Ma-Te-Way Activity Centre		1 Ma-te-way Park Dr.	Area as posted and/or marked
No Frills		680 O'Brien Rd.	Area as posted and/or marked
Renfrew Inn Suites		Hwy 60 W.	Area as posted and/or marked
Renfrew Victoria Hospital		499 Raglan St N.	Area as posted and/or marked
Rio Can Mall		640 O'Brien Rd. 646 O'Brien Rd. 648 O'Brien Rd.	Area as posted and/or marked
Wal-Mart		980 O'Brien Rd.	Area as posted and/or marked

SCHEDULE "DE"
SCHOOL BUS LOADING ZONES

Column 1 Street	Column 2 From To	Column 4 Side	Column 6 Time
Stevenson Cres.	Limits as defined by	West	at any time approved signage

**SCHEDULE “EF”
PERMIT PARKING**

Column 1 Street	Column 2 From	Column 3 To	Column 4 Side	Column 5 Days	Column 6 Time
Grigg Ave.	Raglan St. N.	Termination of Grigg Ave.	both	Mon. - Fri.	7 am - 5pm
<p>*Two(2) registered municipal parking passes will be issued to the residents of Grigg Ave.. This will allow them to park along Grigg Ave. during the prohibited times.</p>					
Moore St.	Bruce St.	North to termination of Moore St.	both	Mon. - Fri.	7am -5 pm
<p>*Two(2) registered municipal parking passes will be issued to the residents of Moore St.. This will allow them to park along Moore St. during the prohibited times.</p>					
Raglan St N	Bruce St.	Grigg Ave.	east	(7) days / week	at any time

*Two(2) registered municipal parking passes will be issued to the residents of Raglan St N.. This will allow them to park along Raglan St. N. during the prohibited times.

SCHEDULE "FG"
ACCESSIBLE PARKING

<u>Column 1</u> <u>Location</u>	<u>Column 2</u> <u>Accessible Parking</u>
30 Raglan Street South	Area as posted and/or marked
83 Raglan Street South (Parking Lot)	Area as posted and/or marked
83 Raglan Street South	Area as posted and/or marked
108 Raglan Street South	Area as posted and/or marked
122 Raglan Street South	Area as posted and/or marked
127 Raglan Street South	Area as posted and/or marked
176 Raglan Street South	Area as posted and/or marked
177 Raglan Street South	Area as posted and/or marked
212 Raglan Street South	Area as posted and/or marked
212 Raglan Street South	Area as posted and/or marked
226 Raglan Street South	Area as posted and/or marked
248 Raglan Street South	Area as posted and/or marked
263 Raglan Street South	Area as posted and/or marked
282 Raglan Street South	Area as posted and/or marked
302 Raglan Street South	Area as posted and/or marked
321 Raglan Street South	Area as posted and/or marked
326 Raglan Street South	Area as posted and/or marked
Railway Avenue	Area as posted and/or marked
Railway Avenue	Area as posted and/or marked
194 Renfrew Avenue East	Area as posted and/or marked
Plaunt Street (Rear Entrance to Town Hall)	Area as posted and/or marked
Plaunt Street (Rear Entrance to Town Hall)	Area as posted and/or marked
184 Bonnechere Street South	Area as posted and/or marked
184 Bonnechere Street South	Area as posted and/or marked
41 Vimy Blvd	Area as posted and/or marked

- Formatted: Font color: Text 2
- Formatted: Font color: Text 2
- Formatted: Font color: Text 2
- Formatted: Font color: Text 2
- Formatted: Indent: Left: 0", First line: 0"

TOWN OF RENFREW

PART II PROVINCIAL OFFENCES ACT
 Parking By-law #29-2012, as amended
 Appendix 1

ITEM	COLUMN 1 Short Form Wording	COLUMN 2 Offence Creating Provision or Defining Offence	COLUMN 3 Voluntary payment (payable within 7 days)	COLUMN 4 Set Fine
1.	Park facing wrong direction	Part II Section 5(1)	\$30.00 20.00	\$30.00 50.00
2.	Park outside defined space	Part II Section 5(2)	\$20.00 30.00	\$30.00 50.00
3.	Park on a sidewalk	Part II Section 6 (a)	\$20.00 30.00	\$30.00 50.00
4.	Park in an intersection	Part II Section 6 (b)	\$20.00 30.00	\$30.00 50.00
5.	Park in a turning basin	Part II Section 6 (c)	\$20.00 30.00	\$30.00 50.00
6.	Park in front of a public driveway	Part II Section 6 (d)	\$20.00 30.00	\$30.00 50.00
7.	Park within 9 metres of an intersection	Part II Section 6 (e)	\$20.00 30.00	\$30.00 50.00
8.	Park within 3 metres of a fire hydrant	Part II Section 6 (f)	\$30.00 50.00	\$50.00 75.00
9.	Park within 6 metres of a crosswalk at an intersection	Part II Section 6 (g)	\$20.00 30.00	\$30.00 50.00
10.	Park on a bridge	Part II Section 6 (h)	\$20.00 30.00	\$30.00 50.00
11.	Park in a manner that obstructs traffic	Part II Section 6 (i)	\$20.00 30.00	\$30.00 50.00
12.	Park in a manner to prevent the convenient departure of other vehicle	Part II Section 6 (j)	\$20.00 30.00	\$30.00 50.00
13.	Park in front of the entrance to a fire station	Part II Section 6 (k)	\$20.00 30.00	\$30.00 50.00
14.	Park in a yield lane	Part II Section 6 (l)	\$20.00 30.00	\$30.00 50.00
15.	Park on a crosswalk	Part II Section 6 (m)	\$20.00 30.00	\$30.00 50.00
16.	Park on a curb	Part II Section 6 (n)	\$20.00 30.00	\$30.00 50.00
17.	Park adjacent to any median strip on the highway	Part II Section 6 (o)	\$20.00 30.00	\$30.00 50.00

□ Note: the general penalty provision for the offences listed above is Part III section 21(1) of bylaw 29-2012, as amended, a certified copy of which has been filed

TOWN OF RENFREW

18.	Park in front of a private driveway	Part II Section 6 (p)	\$20.00 <u>30.00</u>	\$30.00 <u>50.00</u>
19.	Park within .75 metres of a public driveway	Part II Section 6 (q)	\$20.00 <u>30.00</u>	\$30.00 <u>50.00</u>

PART II PROVINCIAL OFFENCES ACT
Parking By law #29-2012, as amended
Appendix 4

ITEM	COLUMN 1 Short Form Wording	COLUMN 2 Offence Creating Provision or Defining Offence	COLUMN 3 Voluntary payment (payable within 7 days)	COLUMN 4 Set Fine
20.	Park within .75 metres of a private driveway	Part II Section 6 (r)	\$20.00 <u>30.00</u>	\$30.00 <u>50.00</u>
21.	Park within 15 metres of a controlled intersection	Part II Section 6 (s)	\$20.00 <u>30.00</u>	\$30.00 <u>50.00</u>
22.	Park on the approach to a bridge	Part II Section 6 (t)	\$20.00 <u>30.00</u>	\$30.00 <u>50.00</u>
23.	Park in front of entrance to a hospital	Part II Section 6 (u)	\$20.00 <u>30.00</u>	\$30.00 <u>50.00</u>
24.	Park on a Boulevard	Part II Section 6 (v)	\$20.00 <u>30.00</u>	\$30.00 <u>50.00</u>
25.	Stop in a designated No Stopping area	Part II Section 7(2)	\$20.00	\$30.00
26.	Park in a designated No Parking area	Part II Section 8 (2)	\$20.00 <u>30.00</u>	\$30.00 <u>50.00</u>
27.	Park in excess of posted time.	Part II Section 9 (2)	\$20.00 <u>30.00</u>	\$30.00 <u>50.00</u>
28.	Park a heavy vehicle in excess of 5,000 kg for more than 2 hours	Part II Section 9 (3)	\$20.00 <u>30.00</u>	\$30.00 <u>50.00</u>
29.	Park on any unsigned highway for longer than 24 hours.	Part II Section 9 (4)	\$20.00 <u>30.00</u>	\$30.00 <u>50.00</u>
30.	Park as to obstruct a designated Fire Route	Part II Section 10 (2)	\$30.00 <u>30.00</u>	\$50.00 <u>50.00</u>
31.	Park in a designated School Bus Loading Zone	Part II Section 11 (3)	\$20.00 <u>30.00</u>	\$30.00 <u>50.00</u>
32.	Park on municipally owned property without consent	Part II Section 12 (1)	\$20.00 <u>30.00</u>	\$30.00 <u>50.00</u>
33.	Park on private property without consent	Part II Section 12 (1)	\$20.00 <u>30.00</u>	\$30.00 <u>50.00</u>
34.	Park in Reserved Space Municipal lot	Part II Section 13 (1)	\$20.00 <u>30.00</u>	\$30.00 <u>50.00</u>

□ Note: the general penalty provision for the offences listed above is Part III section 21(1) of bylaw 29-2012, as amended, a certified copy of which has been filed

TOWN OF RENFREW

35.	Park a vehicle in a Municipal Lot between <u>12</u> am –7 am.	Part II Section 13 (2)	\$20.00 <u>30.00</u>	\$30.00 <u>50.00</u>
36.	Park outside defined space – Municipal lot	Part II Section 13 (3)	\$20.00 <u>30.00</u>	\$30.00 <u>50.00</u>
37.	Park a vehicle between the hours of <u>12:00</u> a.m. & 7:00 a.m. from December 1 to March 31.	Part II Section 14 (1)	\$20.00 <u>30.00</u>	\$30.00 <u>50.00</u>
38.	Park on a highway specially marked with snow removal signs	Part II Section 14 (2)	\$30.00 <u>30.00</u>	\$50.00 <u>50.00</u>

PART II PROVINCIAL OFFENCES ACT
Parking By-law #29-2012, as amended
Appendix 1

ITEM	COLUMN 1 Short Form Wording	COLUMN 2 Offence Creating Provision or Defining Offence	COLUMN 3 Voluntary payment (payable within 7 days)	COLUMN 4 Set Fine
39.	Park in Parking Space for Disabled Persons –No Permit Displayed	Part II Section 17 (1)	\$250.00 <u>300.00</u>	\$300.00 <u>350.00</u>
40.	Park Without Permit	Part II Section 19 (2)	\$20.00 <u>30.00</u>	\$30.00 <u>50.00</u>

□ Note: the general penalty provision for the offences listed above is Part III section 21(1) of bylaw 29-2012, as amended, a certified copy of which has been filed

Accessible Parking Current & Proposed



Legend

- Accessible Parking (Current)
- Accessible Parking (Proposed)
- Remove Space
- Loading Zone (Convert to Accessible Parking)



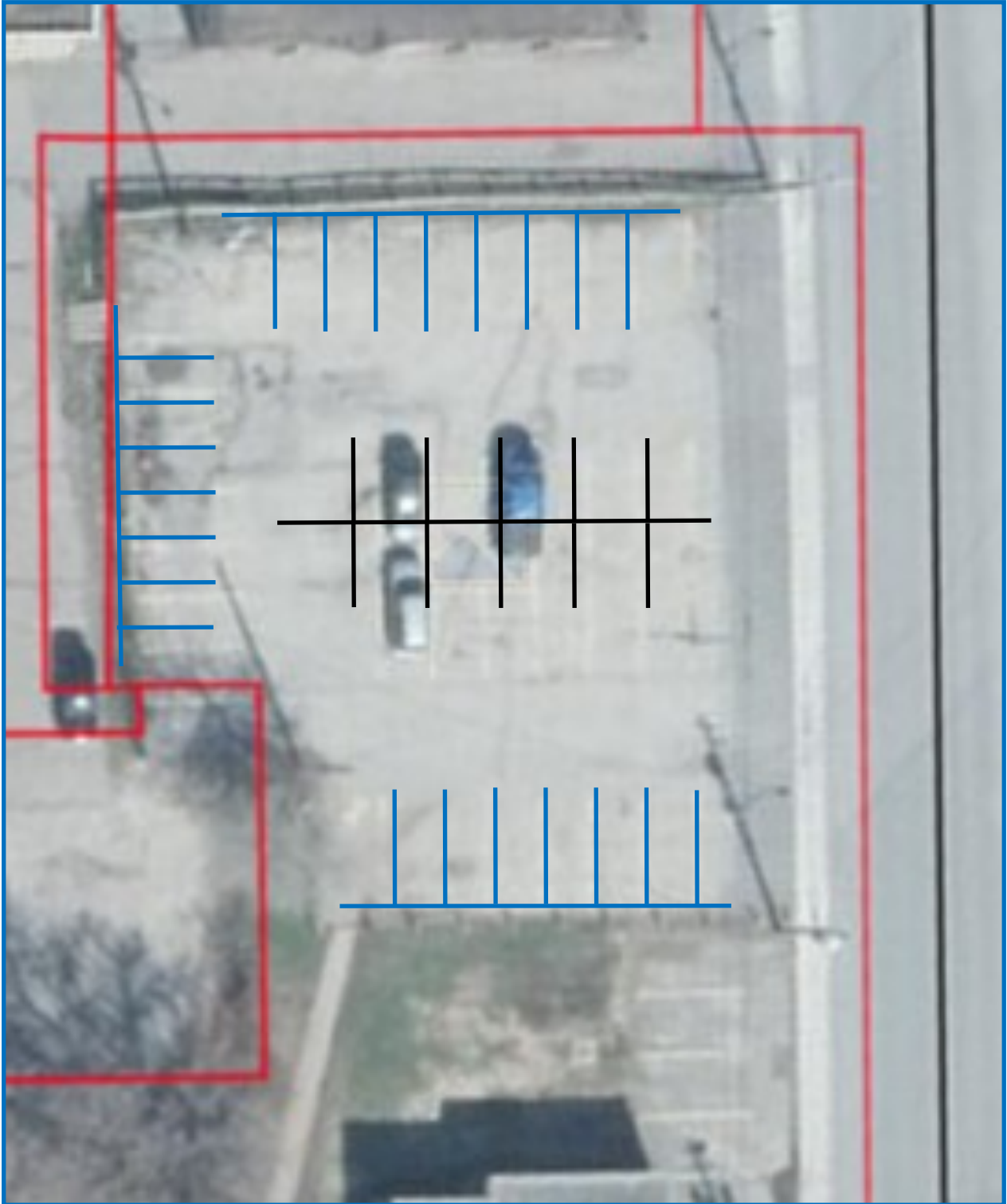
Renfrew
Bridging Charm and Convenience

- 3 Hour Parking Limit
- All Day Parking



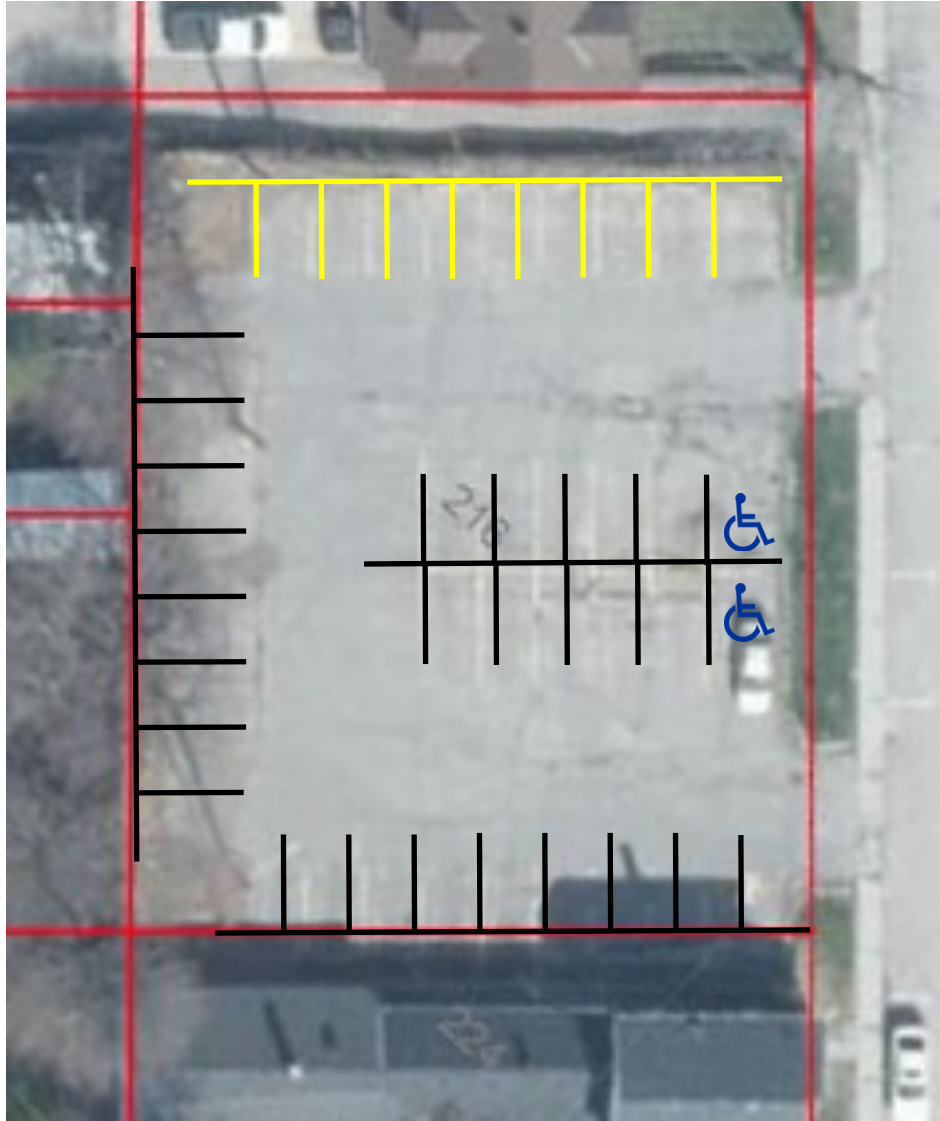
188 Plaunt Street South

- Reserved Parking
- All Day Parking



110 Plaunt Street

- 3 Hour Parking Limit
- All Day Parking



216 Argyle Street South

— 3 Hour Parking Limit



313 Argyle Street South